



# WORK ZONE INCIDENTS

## Facts and Figures for Pennsylvania

Work zone safety is a shared responsibility across all stakeholders in the transportation industry. With this data, we aim to provide greater visibility into the frequency and severity of work zone incidents while reinforcing the critical importance of the safety protocols implemented daily by our contractors to protect their workforce.

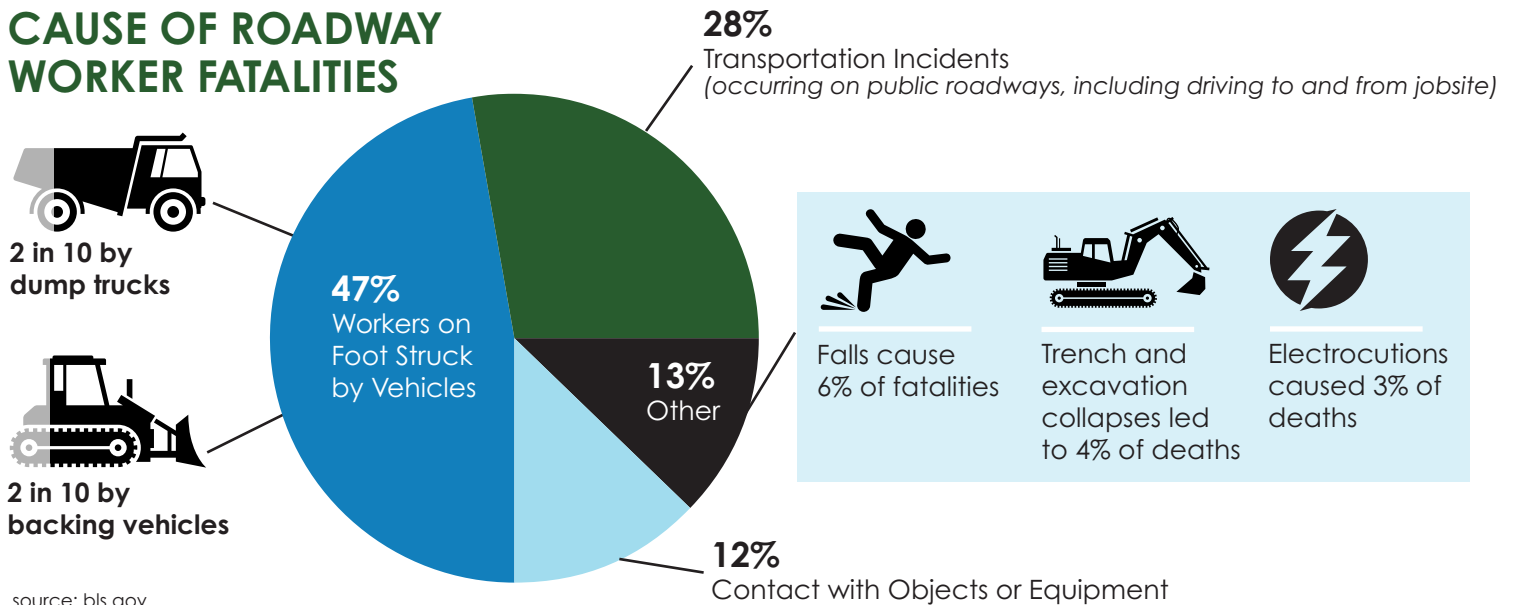


source: U.S. Bureau of Labor Statistics

## WORK ZONE DEATHS BY YEAR IN PENNSYLVANIA

	Driver, Passengers, and Bicyclists	Workers	TOTALS
2023	20	2	22
2022	13	1	14
2021	12	3	15
2020	15	1	16
2019	14	2	16
2018	20	3	23
2017	17	3	20

## CAUSE OF ROADWAY WORKER FATALITIES

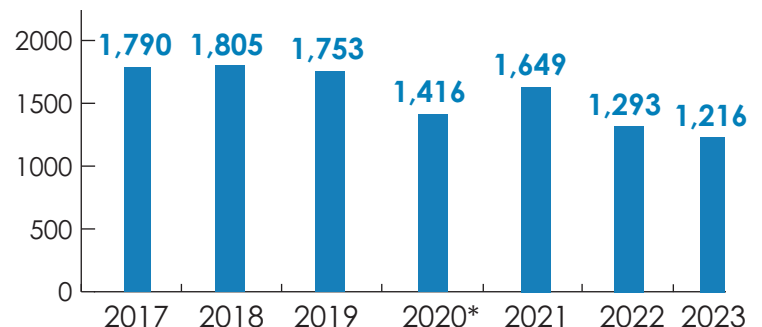


source: bls.gov



## PENNSYLVANIA WORK ZONE CRASHES BY YEAR

\* Work zones were not active from March 15 - May 1, 2020, due to pandemic.



source: PA Crash Information Tool – Commonwealth crash statistics